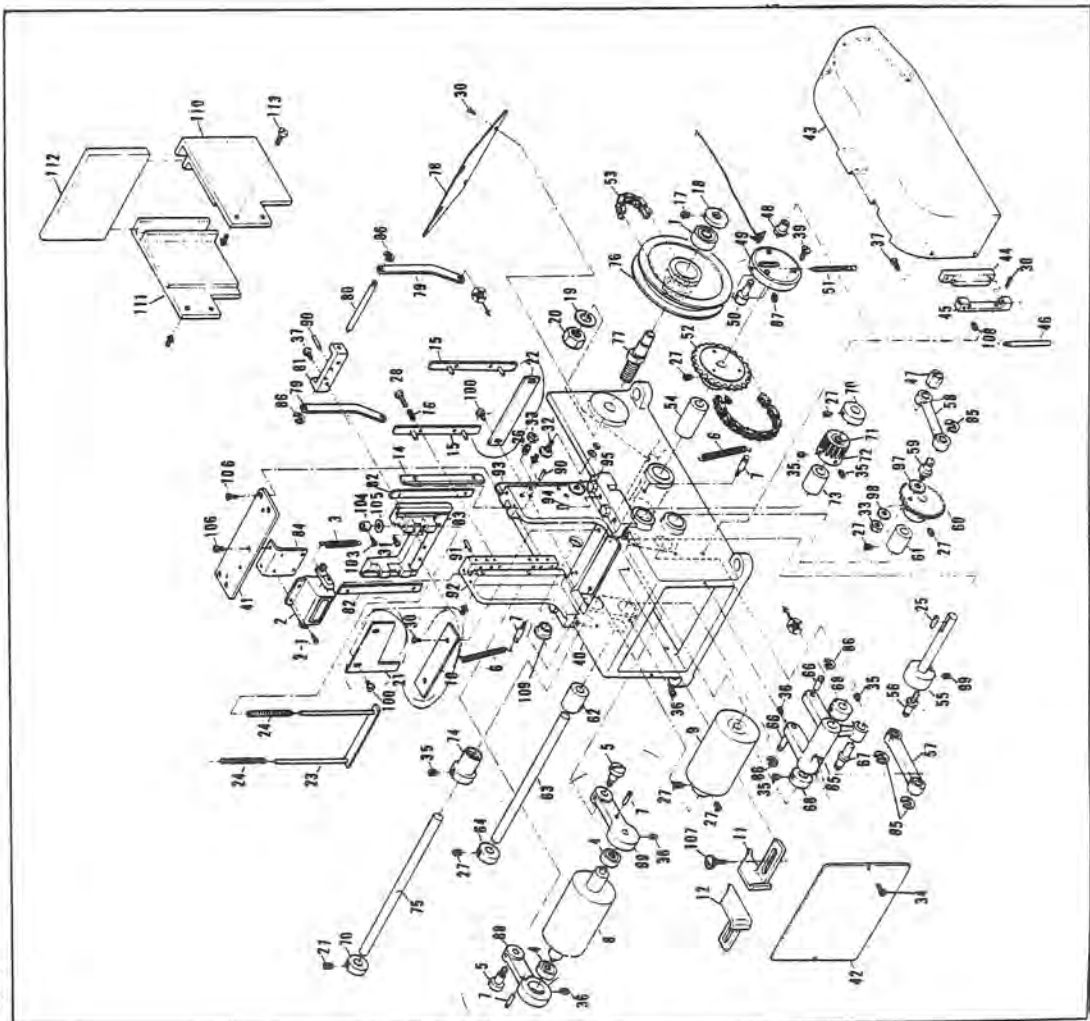


1702 BWK Subclass model
Rear trimmer (BK-10)

TAGLIA PASSANTI PER KANSAI 1702BK

727-A



Ref. No.	Part Name	Part No.	Part Name	Part No.
1	Bearing	08-287	Rocker drive link A	66-509
2	Counter	08-323	Gear drive link B	66-510
2-1	Screw	08-323	Stud	58
3	Counter spring	08-322	Gear	08-306
4	Bearing for upper roller	08-331	Bush (large)	60
5	Upper roller arm set screw	85-195	Bush (small)	81-283
6	Upper roller tension spring	08-328	Rocker shaft	81-284
7	Upper roller tension spring pin	08-329	Rocker shaft collar	71-582
8	Upper roller	08-333	Rocker	75-133
9	Lower roller	08-311	Rocker pin	08-310
10	Guide plate	08-315	Pivot pin	08-308
11	Strip material guide (right)	08-336	Rocker set collar	75-132
12	Strip material guide (left)	08-337	One-way clutch	08-302
13	Upper knife base slide plate A	08-317	One-way clutch gear	08-300
14	Upper knife pushing plate	08-319	One-way clutch shaft bush	72
15	Upper knife pushing spring	46A	One-way clutch shaft	81-282
16	Collar	46B	Pulley with chain wheel	81-304
17	Washer 1/2"	08-286	Pulley set eccentric screw	75
18	Upper knife	08-290	Shoot plate	76
19	Upper knife	08-291	Knife base drive link	08-289
20	Upper knife	08-281	Knife base drive link rod	08-316
21	Strip material presser	08-282	Link rod bracket	78
22	Strip material presser spring	08-326	Upper knife base slide plate	08-312
23	Key	08-327	Counter base	80
24	Screw	08-307	E ring E 20	81
25	Screw	84-713	E ring E 23	82
26	Screw	84-512	E ring E 15	83
27	Screw	802	Arm for rubber roller (left)	84
28	Screw	84-661	Arm for rubber roller (right)	85
29	Screw	808	Spring pin	86
30	Nut	86-411	Taper pin	87
31	Screw	84-564	Base (upper right)	88
32	Screw	84-761	Base (upper left)	89
33	Screw	84-512	Spring pin	90
34	Screw	84-571	Washer	91
35	Screw	829	Washer	92
36	Plate for base	08-285	Screw	93
37	Cover plate	08-325	Screw	94
38	Side cover	08-334	Screw	95
39	Side cover hinge	21-386	Screw	1151
40	Side cover hinge	21-388	Screw	1152
41	Length setting nut	21-387	Screw	1153
42	Ferrule	1108	Screw	84 571
43	Cap	1109	Screw	84 162
44	Length setting screw	08-297	Collar	08 321
45	Length adjusting screw	08-296	Cushion collar	04
46	Chain wheel	08-299	Screw	23 261
47	Chain	08-294	Screw	84 462
48	Bush	08-285	Screw	107 809
49	Stripped shaft	71-583	Oil seal cover	107 809
50	Stud	08-305	Slide holder bracket (right)	108 809 112
51	Stud	00-820	Slide holder bracket (left)	109 23 161
52	Stud		Slide cover	110 08 338
53	Stud			111 08 339
54	Stud			112 08 340
55	Stud			84 564
56	Stud			84 564
727-A				