

# RICAMBI JUKI KL 1900 - 1850 - AMS 210/215/280

## AMS - 215C



FTJ215C-22 mm 2,2  
 FTJ215C-25 mm 2,5  
 FTJ215C-38 mm 3,8

## AMS - 210C

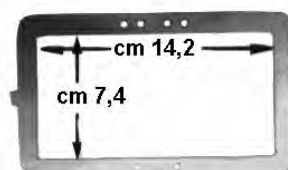


FTJ210C-20 mm 2,0  
 FTJ210C-22 mm 2,2  
 FTJ210C-30 mm 3,0  
 FTJ210C-32 mm 3,2  
 FTJ210C-36 mm 3,6

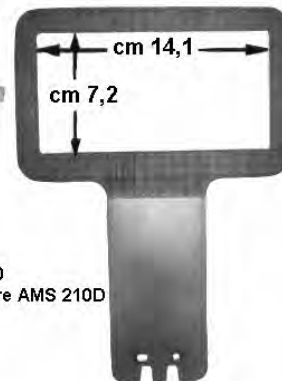
## AMS - 210D



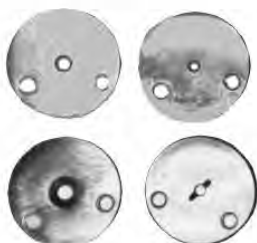
FTJ210D-18 mm 1,8  
 FTJ210D-20 mm 2,0  
 FTJ210D-22 mm 2,2



B2553-210-D00  
 telaio per AMS 210D



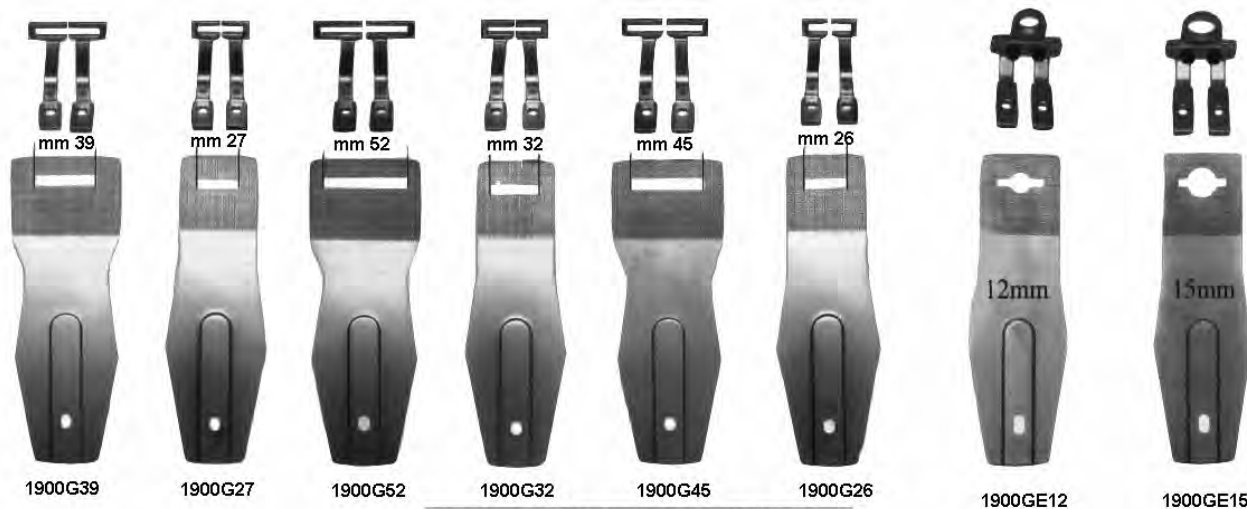
B2552-210-D00  
 pisatra inferiore AMS 210D



### placchette

B2426-210-00A /B/C/E/F/G/H  
 B2426-210-000  
 B2426-280-000  
 B2426-280-00B/C  
 D2426-282-C00

### kit piedini e staffa JUKI KL 1900



1900G39    1900G27    1900G52    1900G32    1900G45    1900G26    1900GE12    1900GE15

### Parts for Juki LK-1850



FPJ1850-6x25

4.8x10mm

FPJ1850-10x25

**Numerosi altri ricambi JUKI originali e non originali sono fornibili su richiesta**